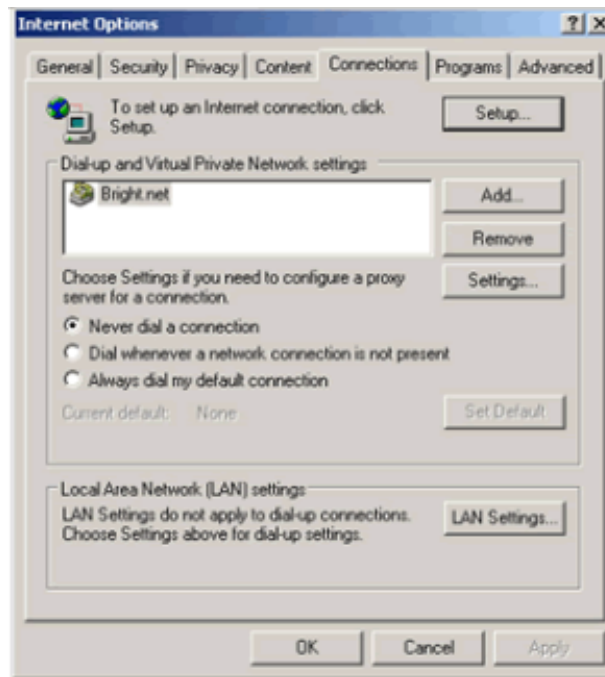


## Proxy Configuration for IE on Windows

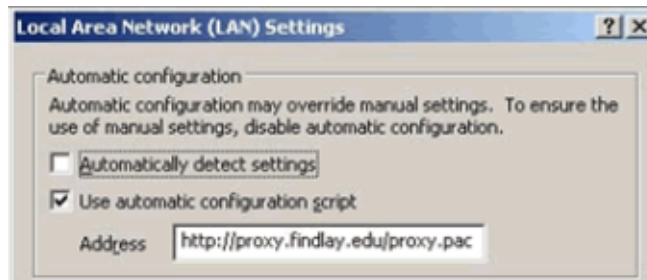
1. Click on the tools menu and select *Internet Options* within Internet Explorer.



2. Either click on the Settings button if you use a Dial-up Connection (make sure your current dial-up connection is selected), or on the LAN Settings button at the bottom if you have a Broadband connection like Cable, DSL or Wireless.



3. Make sure the automatic configuration script check box is checked and type the following address: *http://proxy.findlay.edu/proxy.pac*. Click OK twice.



You must be connected to The University of Findlay VPN for this script to work off campus.