


# International Profile



A photograph of three young adults in business attire (suits and ties) gathered around a wooden desk. They are looking at a laptop screen. The woman in the center is smiling and looking down at the screen. The man on the left is looking at the screen with a focused expression. The man on the right is also looking at the screen. The background is slightly blurred, showing what appears to be a library or study area with bookshelves.

"Our calling at the University of Findlay is to help students find theirs. We have worked to that high purpose since the founding of Findlay College in 1882."

*Katherine Fell*

President, University of Findlay

# Meaningful Lives. Productive Careers.

Our calling at the University of Findlay is to help students find theirs. We have worked to that high purpose since the founding of Findlay College in 1882. Findlay cultivates the potential within each student through academic excellence, transformative experiences and a supportive community.

At the University of Findlay, our mission is to prepare students for meaningful lives and productive careers. Findlay's curriculum, internships and placement initiatives, campus experiences, and undergraduate research and international experience opportunities prepare students to be leaders in their chosen careers.

## Accreditation

University of Findlay is accredited by the Higher Learning Commission\* and the Ohio Department of Higher Education, as well as the national accrediting organizations for athletic training; business; environmental, safety and occupational health management; intensive English language; nuclear medicine technology; nursing; occupational therapy; pharmacy; physical therapy; physician assistant; social work; strength and conditioning; teacher education and TESOL.

## National Reputation

The University of Findlay has ranked in the top tier of the U.S. News & World Report's "America's Best Colleges" in the Midwest for the past 10 years and was named a "Best Midwestern College" by the Princeton Review for each year. UF has also been recognized as one of "America's Best Private Colleges" by Institutional Research and Evaluation Inc., and has earned national honors for campus beauty and environmental efforts.

### FINDLAY FAST FACTS

---

- Fully accredited university
- Located in Findlay, Ohio, U.S.A.
- Total enrollment: 4,200
- More than 600 international students from 40+ countries
- 16:1 Student to faculty ratio
- 60+ undergraduate and graduate degrees
- Free tutoring
- Scholarships available

### TOP FIVE MAJORS FOR INTERNATIONAL STUDENTS

---

- ① Business
- ② Computer Science
- ③ Teaching English to Speakers of Other Languages (TESOL)
- ④ Education
- ⑤ Environmental, Safety & Occupational Health Management

\*Any questions regarding the University of Findlay's accreditation status with The Higher Learning Commission visit [www.hlcommission.org/General/contact-us.html](http://www.hlcommission.org/General/contact-us.html) or contact them at: 230 South LaSalle St., Suite 7-500, Chicago, IL 60604, [inquiry@hlcommission.org](mailto:inquiry@hlcommission.org) or 1-800-621-7440.

# Living and Learning at Findlay

Research is paramount at University of Findlay. With more than 25 science laboratories, a substantial cadaver lab, student-run green technology houses, and the Rieck Center – our 55-acre outdoor “classroom” – students are encouraged to take what they learn in the classroom and test those theories under the coaching and guidance of faculty mentors.

Findlay also has an active arts community in both creative and performing arts. At Findlay, our students benefit from being able to pursue their academic passion and continue to have a creative outlet through visual and performing arts.

## Housing and Living Space

As international students, you can choose to live on campus or live close to campus in a non-university owned/managed apartment or house. To help new students decide the best living option, the University has a number of International Welcome Houses. New international students may stay in the Welcome Houses for up to 10 days while they decide whether they want to live on or off campus. The houses are located on campus and each is staffed with a graduate assistant. All houses have furnished bedrooms, a living room, kitchen, wireless Internet and laundry facilities. The cost is \$20 per night. For students who would like to purchase a bedding set (sheets, pillowcase, blanket, pillow, bath towel, hand towel and a washing sponge), they are available for \$50.

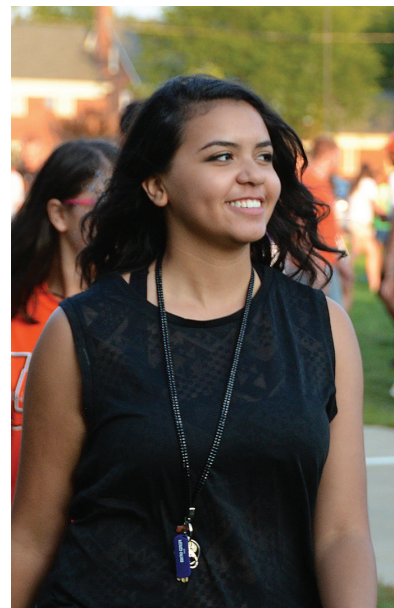
Students deciding to live on campus, will join the more than 1,350 other students who live in one of the University’s eight residence halls, spacious townhouses, apartment-style cottages and special interest houses.

## Activities & Adventures

Since UF is a small campus, students can be involved in as many activities as they want. They can sing in the Concert-Chorale, join a social fraternity, host a show on WLFC 88.3 or become a part of any of our student organizations. Students also enjoy concerts, comedians and entertainers that perform on campus, at no additional cost.

## Recreational Services

UF has 24 intercollegiate sports teams and is a member of the National Collegiate Athletic Association (NCAA) Division II and of the Great Lakes Intercollegiate Athletic Conference, and competes in the Intercollegiate Horse Show Association and Intercollegiate Dressage Association. Findlay also offers many intramural sports teams that are open to all students, cardio center with indoor track and game rooms with arcade-style games, ping pong and air hockey tables.



## AVAILABLE SERVICES

### Cosiano Health Center

- Located on campus
- Free, walk-in clinic for students, faculty and staff.
- Provides general health assessments, first aid, numerous diagnostic tests, physicals and referrals to specialists.

### Campus Safety and Security

- Office of Campus Safety and Emergency Management is staffed 24 hours a day.
- Code Blue emergency phones are installed throughout campus.
- Campus police and security officers work in cooperation with the city police.

### Support Services

- Individualized academic advising and mentoring.
- Tutoring
- Immigration advisor on staff.
- Full-time credential advisor on staff.
- Internship and career placement

### Transportation Services

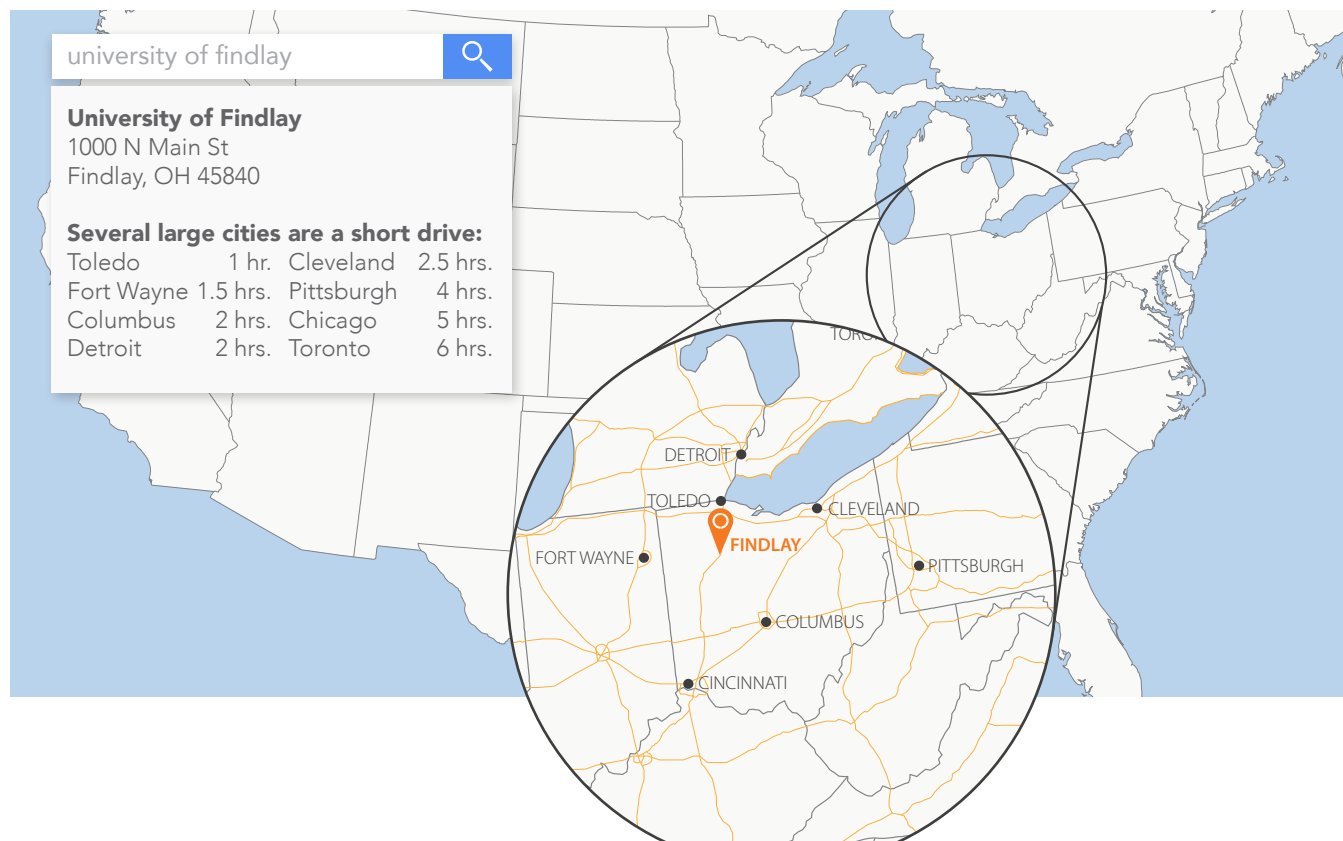
- A shuttle to local shopping and grocery stores is available free of charge on a weekly basis.
- New student airport pickup available for \$50

## The Right Place for You

The University of Findlay is conveniently located in the northwest Ohio city of Findlay. The community features an active downtown, shopping, fine dining and a strong arts and culture presence. Also, major cities are a quick road trip away.

### Things to Know About the City of Findlay and Northwest Ohio

- Small, safe city with low crime rates and 40,000 residents located in the Midwest part of the United States. BizJournals.com has identified Findlay as one of the top 40 "Dream Towns" in the U.S.
- Fifteen high-profile Fortune 500 companies have chosen to locate in this "micropolitan" area. Marathon Petroleum Company and Cooper Tire and Rubber Company call Findlay home.
- Mass public transportation is not available in Findlay. However, there is a taxi service in the city, and the University offers a shuttle service to local shopping.
- Northwest Ohio weather varies with the four seasons in this lush region that enjoys brilliant blue skies and 21 degree Celsius days in the spring; hot summer days perfect for swimming; crisp 10 degree Celsius fall days and winters that turn campus into a beautiful winter wonderland.



# 2016–2017 Tuition and Fees

A full-time undergraduate student at Findlay normally takes between 12-18 credit hours per semester. A full year of undergraduate tuition is \$31,436. It is estimated to take four years to complete an undergraduate degree.

## Estimated Funding Required for I-20 Issuance<sup>1</sup>

Program		Program	
Intensive English Language Program (IELP)	\$25,569	Master of Science in Applied Security and Analytics	\$23,619
Bachelor of Science/Arts	\$42,404	Master of Science in Environmental, Safety and Health Management	\$22,481
Bachelor of Science in Equestrian Studies	\$49,230	Master of Science in Health Informatics	\$24,357
Bachelor of Science in Animal Science	\$44,385	IELP/Master of Business Administration	\$24,410
Doctor of Pharmacy	\$51,703	IELP/Master of Science in Applied Security and Analytics	\$24,529
Master of Arts in Education; Rhetoric and Writing; and TESOL	\$20,021	IELP/Master of Science in Environmental, Safety and Health Management	\$24,134
Master of Athletic Training	\$26,334	IELP/Master of Science in Health Informatics	\$24,898
Master of Business Administration	\$23,032		

## Undergraduate Scholarships

Program	Amount
Presidential Scholarship	<b>\$15,000 per year</b>
Deans Scholarship	<b>\$14,000 per year</b>
Findlay Award Scholarship	<b>\$10,000 per year</b>
IELP	<b>\$1,500 per year (renewable)</b>

## Graduate Scholarships

Program	Amount
MBA Scholarships	<b>\$2,000 over course of program</b>
Environmental, Safety & Health Management Scholarship	<b>\$2,000 over course of program</b>
Graduate Scholarship (excluding MBA and Environmental)	<b>\$1,000 over course of program</b>



## Graduate Program Costs<sup>2</sup>

Program	Tuition		Credit Hours		Total Cost of Tuition
Master of Arts in Education	\$493 per credit hour	x	33 credit hour program	=	\$16,269
Master of Arts in Rhetoric and Writing	\$499 per credit hour	x	36 credit hour program	=	\$17,964
Master of Arts in TESOL/Bilingual Education	\$493 per credit hour	x	36 credit hour program	=	\$17,748
Master of Athletic Training	\$861 per credit hour	x	66 credit hour program	=	\$56,826
Master of Business Administration	\$658 per credit hour	x	33 credit hour program	=	\$21,714
Master of Physician Assistant	\$926 per credit hour	x	91 credit hour program	=	\$84,266
Master of Science in Applied Security and Analytics	\$710 per credit hour	x	33 credit hour program	=	\$23,430
Master of Science in Environmental, Safety and Health Management	\$627 per credit hour	x	33 credit hour program	=	\$20,691
Master of Science in Health Informatics	\$751 per credit hour	x	33 credit hour program	=	\$24,783

<sup>1</sup> Amounts do not include any scholarships students may receive.

<sup>2</sup> Room and board are optional for international students. Room and board for one year is approximately \$9,538. Most international students live off campus saving them approximately \$4,500 per year.

## ADMISSIONS

### Undergrad Testing Requirements

- TOEFL Internet-based score: 61
- IELTS band score: 6.0

### Graduate Testing Requirements

- TOEFL Internet-based score: 79
- IELTS band score: 7.0
- IELTS Overall Band Score of 6.5 with a minimum of 6.5 in all components of the test. (MBA Program Only)

Students who do not meet the English requirement may be eligible for conditional admission through the Intensive English Language Program (IELP). Pharmacy and physician assistant students are not eligible.

### Intensive English Language Program (IELP)

The University's IELP trains international students in the English language and American life customs. The program prepares students to succeed by improving their spoken and written English, using computers to prepare for classroom assignments and introducing the American higher education system. University credit is earned while studying in the IELP.

# Programs of Study

## Undergraduate

---

### Accounting

- Financial Accounting
- Managerial Accounting

### Animal Science

- Pre-Veterinary Medicine
- Science

### Art

### Art Management

### Biology<sup>1</sup>

### Business Management

### Chemistry<sup>1</sup>

### Children's Book Illustration

### Computer Science

- Business
- Computer Systems
- Computer Technology
- Information Assurance
- Mathematics
- Web & Database

### Criminal Justice

### Criminal Justice

- White-Collar Crime & Fraud Investigation

### Diagnostic Medical Sonography

### Echocardiography

### Economics

### Education

- Adolescent/Young Adult
  - Integrated English/Language Arts
  - Integrated Mathematics
  - Integrated Science
  - Integrated Social Studies
  - Life Science
- Early Childhood
- Intervention Specialist Education/ Mild to Moderate Disabilities
- Middle Childhood
  - Language Arts/Math
  - Language Arts/Science
  - Language Arts/Social Studies
  - Math/Science
  - Math/Social Studies
  - Science/Social Studies
- Multi-Age
  - Health & Physical Education

- Japanese
- Spanish
- Visual Arts

### English

- Creative Writing
- General Writing
- Literature
- Teaching

### Environmental, Safety &

### Occupational Health Management

### Equestrian Studies

- English Riding/Training
- Western Riding/Training

### Equine Business Management

### Finance

### Forensic Biology

### Forensic Chemistry

### Graphic Design

### Health & Physical Education

### Health Science

- Pre-Occupational Therapy
- Pre-Physical Therapy

### Wellness and Exercise Promotion

### Healthcare Management

### History

### Hospitality Management

### Human Resource Management

### Japanese

### Journalism/Digital Media

### Law & the Liberal Arts (pre-law)

### Marketing

### Mathematics

- Applied Emphasis for Actuary Preparation
- Applied Emphasis for Computer Science
- Applied Emphasis for Engineering Science
- Applied Emphasis for Operations Research
- Pure Mathematics

### Medical Laboratory Science

### Nuclear Medicine Technology

### Nursing<sup>2</sup>

### Operations & Logistics

### Philosophy

### Political Science

### Positron Emission Tomography/ Computed Tomography Technology (PET/CT)

### Psychology

### Public Relations

### Religious Studies

- Biblical Studies
- Christian Studies
- Comparative Religion Studies
- Individualized Studies

### Social Work

### Sociology

### Spanish

### Sport & Event Management

### Strength & Conditioning

### Teaching English to Speakers of Other Languages (TESOL)

### Theatre

- Performance
- Production Design & Technology

### Vascular Sonography

## Graduate

---

### Applied Security & Analytics

### Athletic Training<sup>2</sup>

### Business Administration

### Education (Master & Doctorate<sup>2</sup>)

### Environmental, Safety & Health Management

### Health Informatics

### Occupational Therapy<sup>2</sup>

### Pharmacy (Doctorate)<sup>2</sup>

### Physician Assistant<sup>2</sup>

### Physical Therapy (Doctorate)<sup>2</sup>

### Rhetoric & Writing<sup>2</sup>

### Teaching English to Speakers of Other Languages (TESOL)/Bilingual Education

<sup>1</sup> Recommended majors for students interested in medical school.

<sup>2</sup> International students should consult their admissions counselor for specific eligibility criteria.